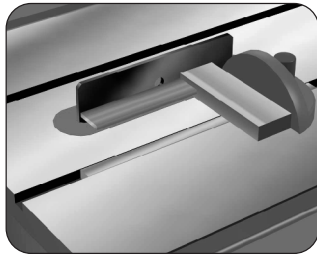


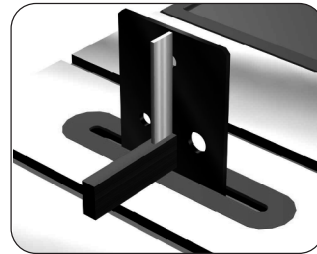
Thank you for purchasing the **MasterPlate™** (Patent Pending) You will find it extremely useful in making all of those "invisible" misalignments completely **visible**. Remember - your tablesaw needs to be checked on regular basis for any misalignment.

Paul Reilly,
President and Founder
MasterGage, Inc.

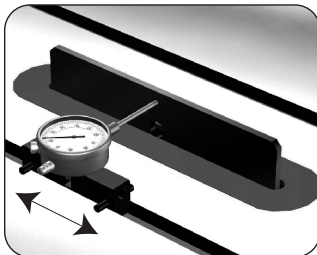
Fast, Easy & Accurate!



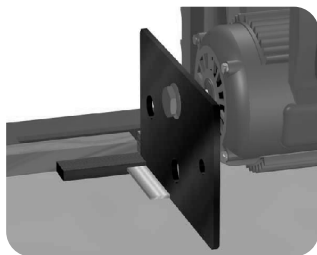
▲ **Table Saw**
Squaring the Miter gauge to the **MasterPlate***



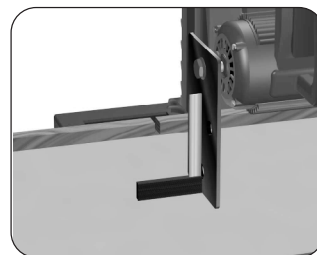
▲ **Table Saw**
Squaring the **MasterPlate** to the table top surface*



◀ Illustration shows the **SuperBar** (Not Included) with the precision ground **MasterPlate**. Use The **SuperBar** with the **MasterPlate** for **MAXIMUM RESULTS**



▲ **Radial Arm Saw**
Squaring the **MasterPlate** to the fence*



▲ **Radial Arm Saw**
Squaring the **MasterPlate** to the table top surface*

* Try Square not included

MasterPlate™ Benefits

- Saw blades are made for cutting wood-not for aligning and calibrating your equipment. Using a saw blade to align your system gives you limited distance to measure because of the saw carbide tips, gullets, anti-noise slots and pitch build up on the blade.
- Measure/set the MasterPlate's full 10" parallel to miter slot. [versus about 3 inches of measurable height on a 10" blade]
- Measure/set the MasterPlate's vertical height of almost 7" perpendicular to the table top [versus about 3" of measurable distance on a 10" blade]
- Set miter and bevel angles to within MINUTES OF A DEGREE!
- MasterPlate is a solid 6" x 10" x 1/4" thick aluminum "tool makers" quality plate, precision ground to within thousandths of an inch!
- Fits all 5/8" and 1.0" diameter saw arbors. [30 mm also available]

The **MasterPlate™** can tune up and align the following systems:

- Table Saw
- Radial Arm Saw
- Sliding Compound Miter Saw
- Chop Saw
- Disk Sanding Machine
- Manual Miter Box

Check/Set/Align/Calibrate & Adjust any and all of these machines/systems:	Table Saw	Radial Arm Saw	Sliding Compound Miter Saw	Chop Saw	Disk Sanding Machine	Manual Miter Box
SQUARENESS to saw table top	X	X	X	X	X	
PARALLEL to rip fence	X	X				
SQUARENESS to rip fence		X	X	X		X
PARALLEL to miter slot	X				X	
SQUARENESS to miter gauge	X				X	
Set ANY ANGLE accurately	X	X	X	X	X	X

The **MasterPlate™** is a precision tool and should not be mistreated. Treat your **MasterPlate™** like a fine tool and it will last a lifetime.