

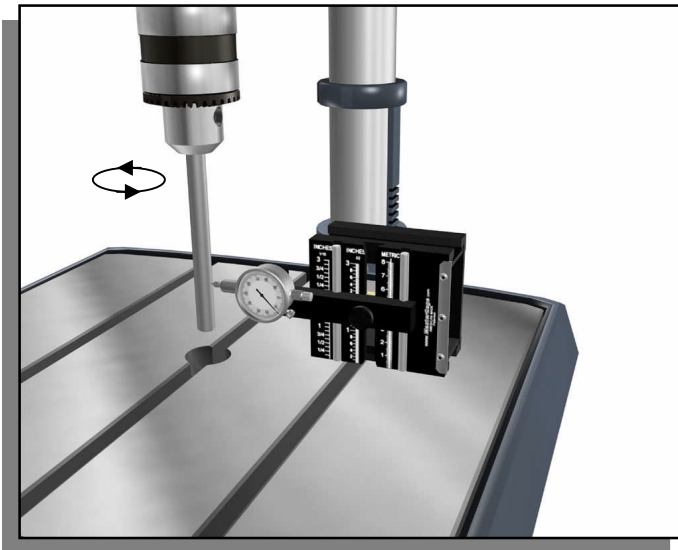
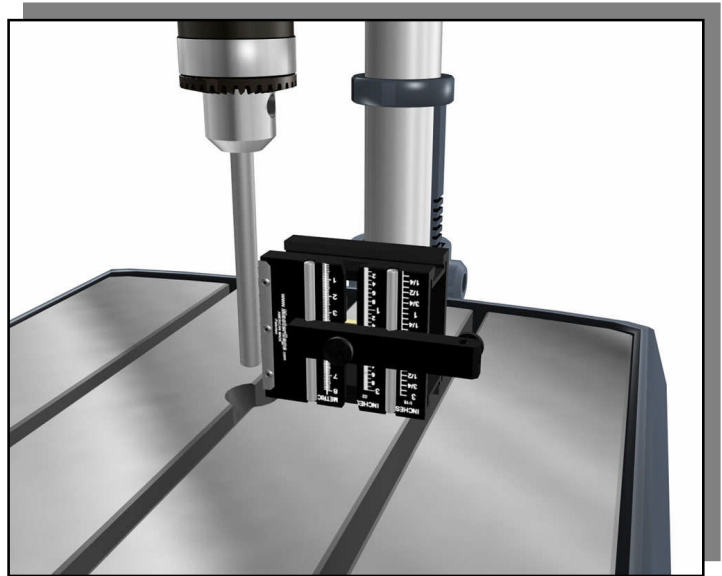
# **SECTION E**

## **DRILL PRESS**

# DRILL PRESS

Square table to spindle precisely

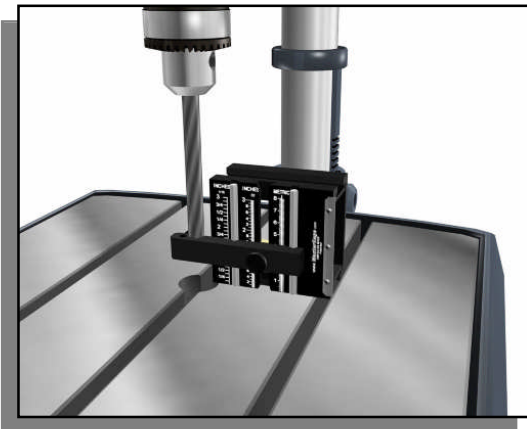
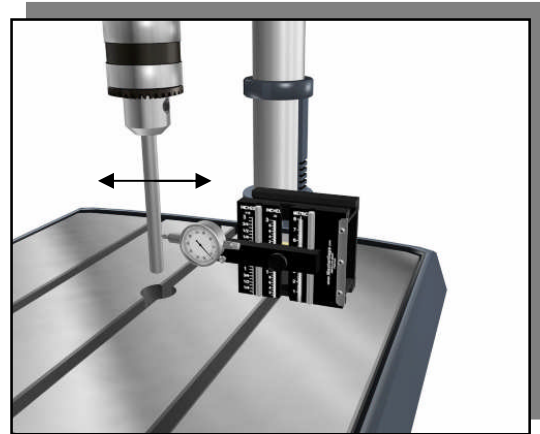
TIP: Utilize the ½" diameter Precision Rod that offers a polished smooth and straight surface to get accurate results.



Check spindle run out by rotating the check by hand and reading the dial indicator at the tip if the Precision Rod

# DRILL PRESS

Check spindle bearing run out by moving the tip of the Precision Rod side to side and reading the dial indicator.



Measure/set any drill bit height accurately. Establish depth of drilled hole quickly

Check and measure drill bit diameters very accurately with the dial indicator and flat tip dial indicator tip.

TIP: Always measure the smooth end of the bit – not the flutes.

