

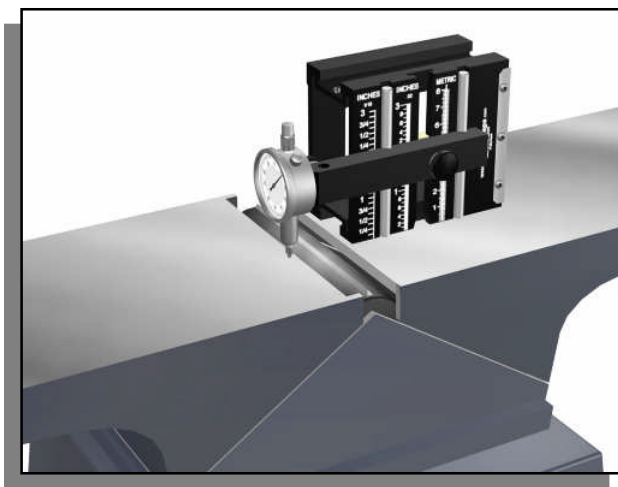
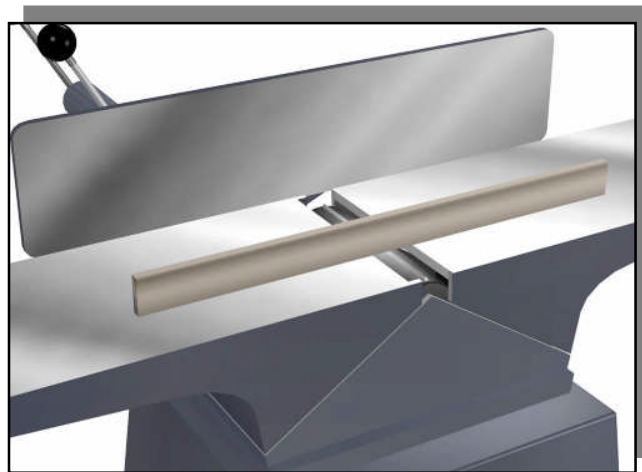
SECTION G

JOINTER

JOINTER

Perform the following procedures in tuning your jointer.

1. Using an accurate straight edge steel rule, check the flatness of both the Infeed and the Outfeed Tables. HINT: Sprinkle baby talc powder on the tables and drag the straight edge across the surface carefully. Much like concrete a mason dragging his top leveler across the cement to get it flat. This will give you a visual indication of where the hills and valleys are on the beds. Use this same technique on your tablesaw.
2. Bring the Infeed Table up to its maximum height, which should be equal to the height of the Outfeed Table. Place the straight edge across both the Infeed and Outfeed Tables. They should be absolutely parallel with each other. If not, make the appropriate adjustments.



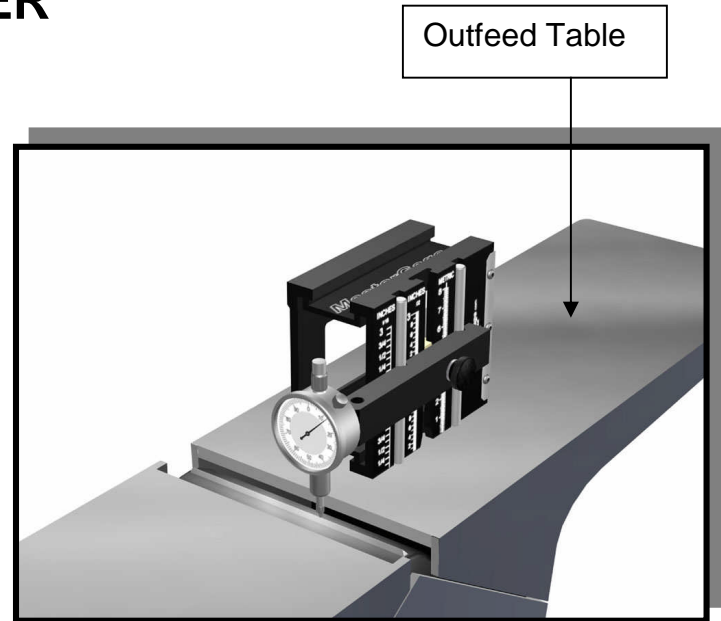
Outfeed Table

With the Dial Indicator tip touching the Infeed Table, sweep the *Classic* back and forth across the width of the Infeed Table to verify that the Infeed Table is parallel to the Outfeed Table. Adjust to bring it in parallel

JOINTER

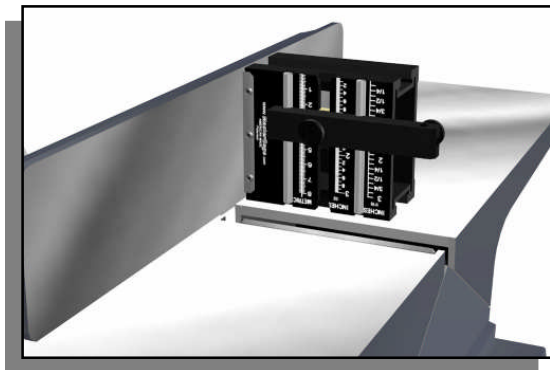
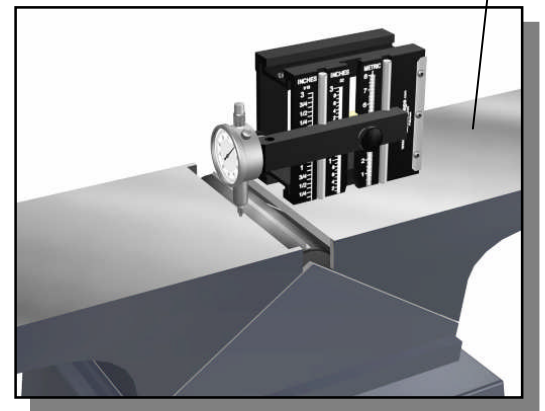
PROCEDURE FOR CHECKING AND ADJUSTING THE EXISTING BLADES – OR INSTALLING NEW BLADES.

1. Install the dial indicator flat tip.
2. Position the *Classic* on the outfeed table and “zero out” the dial indicator on the outfeed table surface. [This establishes the maximum height of the blade]
3. Using the *Classic*, rotate the cutter until the blade is at Top Dead Center [TDC]. Secure the cutter head at that position [tape will do it nicely] by spanning the tape from the Outfeed Table, to the cutter head to the Infeed Table.
4. Check and set the blade to zero on the dial indicator. Repeat steps 2 and 3
5. NOTE: Change one blade at a time.



Outfeed Table

Finding the Infeed/Outfeed Table offset is fast and easy with the *Classic*. Simply zero-out the Dial Indicator on the Outfeed Table, place the Dial Indicator on the Infeed Table-**PRESTO**, the off set is given to you in thousandths of an inch! You no longer have to rely on the inaccurate jointer scales for the offset readings.



Square fence to table