

MasterPlate™

Super Tune your tablesaw & radial arm saw- Fast!



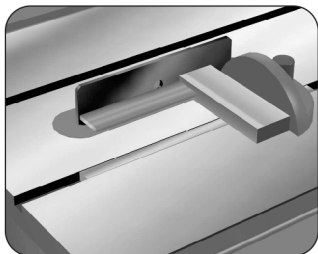
Instruction Manual

Substitute the MasterPlate™ for your saw blade to tune up, align and calibrate your table saw - get the maximum performance from your saw!

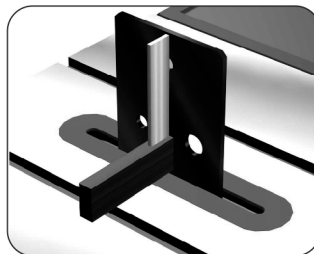
Thank you for purchasing the **MasterPlate™** (Patent Pending) You will find it extremely useful in making all of those "invisible" misalignments completely **visible**. Remember - your tablesaw needs to be checked on regular basis for any misalignment.

Paul Reilly,
President and Founder
MasterGage, Inc.

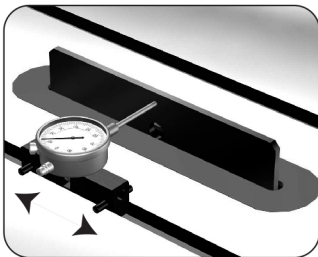
Fast, Easy & Accurate!



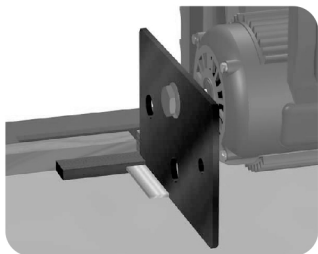
▲ **Table Saw**
Squaring the Miter gauge to
the **MasterPlate***



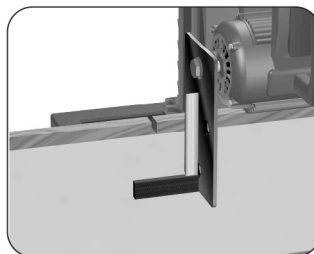
▲ **Table Saw**
Squaring the **MasterPlate**
to the table top surface*



◀ Illustration shows the **SuperBar**
(Not Included) with the precision ground
MasterPlate. Use The **SuperBar** with
the **MasterPlate** for MAXIMUM RESULTS



▲ **Radial Arm Saw**
Squaring the **MasterPlate**
to the fence*



▲ **Radial Arm Saw**
Squaring the **MasterPlate**
to the table top surface*

MasterPlate™ Benefits

- *Saw blades are made for cutting wood-not for aligning and calibrating your equipment. Using a saw blade to align your system gives you limited distance to measure because of the saw carbide tips, gullets, anti-noise slots and pitch build up on the blade.*
- *Measure/set the MasterPlate's full 10" parallel to miter slot. [versus about 3 inches of measurable height on a 10" blade]*
- *Measure/set the MasterPlates's vertical height of almost 7" perpendicular to the table top [versus about 3" of measurable distance on a 10" blade]*
- *Set miter and bevel angles to within MINUTES OF A DEGREE!*
- *MasterPlate is a solid 6" x 10" x 1/4" thick aluminum "tool makers" quality plate, precision ground to within thousandths of an inch!*
- *Fits all 5/8" and 1.0" diameter saw arbors. [30 mm also available]*

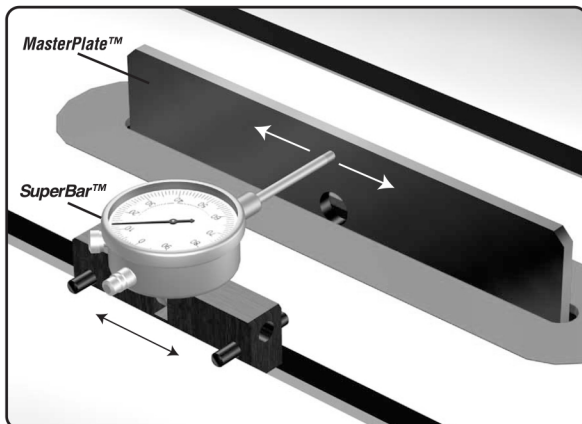
The **MasterPlate™** can tune up and align the following systems:

- | | |
|-------------------------------------|-------------------------------|
| • Table Saw | • Chop Saw |
| • Radial Arm Saw | • Disk Sanding Machine |
| • Sliding Compound Miter Saw | • Manual Miter Box |

Check/Set/Align/Calibrate & Adjust any and all of these machines/systems:	Table Saw	Radial Arm Saw	Sliding Compound Miter Saw	Chop Saw	Disk Sanding Machine	Manual Miter Box
SQUARENESS to saw table top	X	X	X	X	X	
PARALLEL to rip fence	X	X				
SQUARENESS to rip fence		X	X	X		X
PARALLEL to miter slot	X				X	
SQUARENESS to miter gauge	X				X	
Set ANY ANGLE accurately	X	X	X	X	X	X

The **MasterPlate™** is a precision tool and should not be mistreated.
Treat your **MasterPlate™** like a fine tool and it will last a lifetime.

SuperBar™ and the MasterPlate™



The SuperBar™ (Not Included) will align, tune up and calibrate your table saw to within thousandths of an inch! Illustration on left shows the SuperBar™ with the precision ground MasterPlate™. The SuperBar and MasterPlate™ are the perfect solution to Super Tune your saw!

Now you can SUPER TUNE your table saw FAST!

Tune your saw and keep it tuned to within thousandths of an inch [1/1000 inch]!

Easy to use - The SuperBar will let you do the following:

- Check saw arbor shaft for run out
- Check saw flange for run out
- Align the saw blade parallel to miter slot
- Align the scoring blade [if applicable] parallel to miter slot
- Align the rip fence parallel to miter slot
- Check the rip fence for warpage
- Check the saw blade for run out
- Check for bearing wear
- Check run out on routers, drill presses, shapers, band saw wheels, etc.
- Plus many other uses!

The SuperBar™ (Patent Pending) fits standard 3/4 x 3/8 miter slots and Sears models [.740 slot] Shopsmith version (.720 slot) also available

MasterPlate - \$49 • SuperBar - \$69

*MasterGage® Corporation, P.O. Box 3072 Thousand Oaks, California 91359-0072 USA
Call for FREE brochure - TOLL FREE 888/893-8300 www.mastergage.com*

WARNING: Always disconnect power before using these tools!